

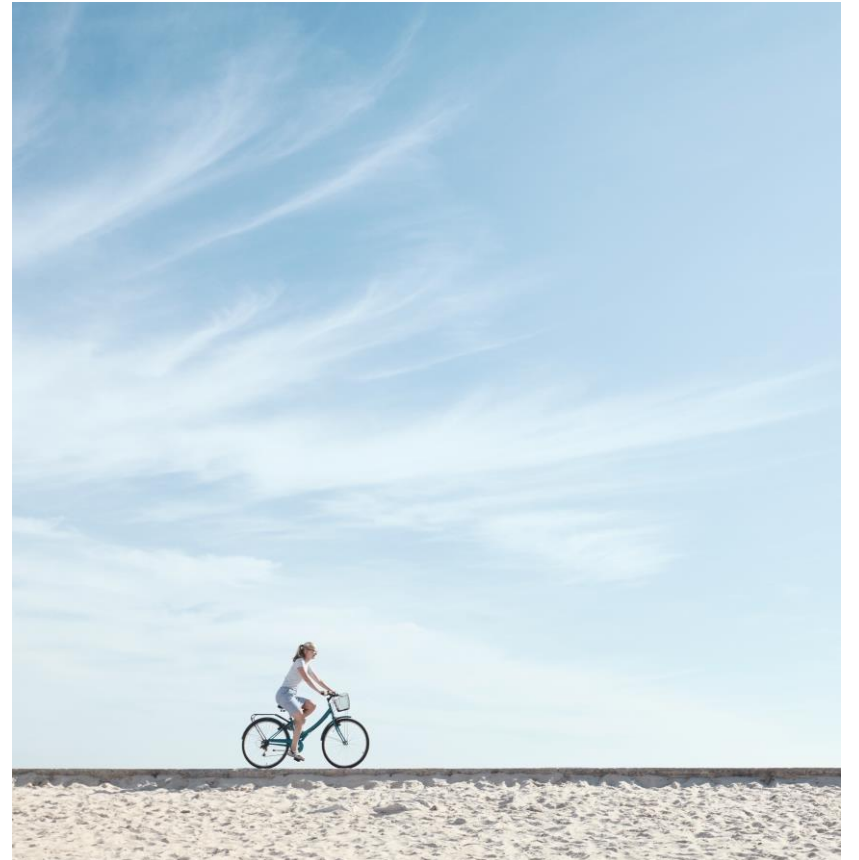
A mountain biker wearing a white helmet, sunglasses, and a black and white jersey is riding a red mountain bike on a rocky trail. The background is a dense forest of tall trees. The image is slightly blurred to convey motion.

**KKL-JNF's
Countrywide
Bicycle Paths**


2026

KKL-JNF regards its cycling trails as life's connectors, in more than one way.

- KKL-JNF is currently the leading entity in the development of off-road bike trails in Israel.
- The countrywide network of over 1,300 km of forest cycling trails and 240 km of urban bike paths we've paved to date connect people to nature, and entire populations to cycling as a sport.
- The next step: Completing the master plan for a 6,170 km national cycling trail network that enables people to explore the entire country by bike – similar to the Israel National Trail, but for wheels.
- Many of the paths are accessible to cyclists of all abilities. Total asphalt-paved trails – 34. Total accessible trails – 39.



Explore our cycling-related projects to find out more!

A photograph showing two people on a boat. In the foreground, a man with short dark hair is seen from the side, pointing his right hand towards a body of water in the distance. Behind him, another person wearing a dark cap and a blue long-sleeved shirt is also pointing in the same direction. The background consists of a dense forest of green trees and a clear blue sky. The overall scene is bright and sunny.

79

SINGLE TRACKS
TO CHOOSE FROM

Why Bicycle Paths?

Health Benefits

- Promotes physical activity, improving cardiovascular health
- Encourages an active lifestyle, reducing obesity and related diseases
- Lowers stress and enhances mental well-being through outdoor exercise



Economic Benefits

- Attracts tourism and boosts local businesses along the route
 - Reduces healthcare costs by promoting a healthier population
-

Community & Social Benefits

- Encourages social interaction and community engagement
- Enhances road safety by separating cyclists from vehicles



The North



Carmel Connections: The Orchard Single - A Cycling Link to Nature and Community

- **Description:** 27 km single track in the Carmel that connects Ein Hod, Yamin Ord, Nir Etzion, and Dalit El Carmel, fostering connections among Arab, Druze, and Jewish communities.
- **Project number:** 20968
- **Project cost:** NIS 643,500 - 1,287,000
- **More Info:** <https://marketing.kkl-jnf.org/single-project/?project-id=20968>



The Hula Valley Mahanayim Single track: Boosting Sustainable Tourism in Israel

- **Description:** The 28 km path is designed for professional riders and consists of four distinct sections, each varying in length. These sections offer breathtaking views of the Hula Valley and traverse the vicinity of Mahanaim, Hulata, Yesod HaMaala, Mishmar HaYarden, and Gadot.
- **Project number:** 19749
- **Project cost:** NIS 350,000 - 700,000
- **More Info:** <https://marketing.kkl-jnf.org/single-project/?project-id=19749>



The Center



Discover the Beauty of Begin Park with a New Biking Trail

- **Description:** The trail is a 5.5-kilometer circular path, ideal for family outings and leisure rides. Designed with accessibility in mind, future developments will ensure that the path can accommodate riders with disabilities, making it an inclusive space for everyone to enjoy.

The trail passes by some of Begin Park's most iconic and attractive spots, including Begin Lookout and Ein Kobi, offering riders breathtaking views and serene rest stops.

- **Project number:** 19346
- **Project cost:** NIS 1,330,000 - 2,660,000
- **More info:** <https://marketing.kkl-jnf.org/single-project/?project-id=19346>



The South



The Pleasure of Cycling in a Northern Negev Forest – Lahav Abu Hof Singe

- **Description:** The trail provides access to the Lahav Forest for the residents of Meitar, Carmit and Sansana, and is also part of the Israel National Biking Trail that traverses Israel from north to south.

Cyclists enjoy the forest landscape while exercising in the wide outdoors.

- **Project number:** 19403
- **Project cost:** NIS 743,458 - 1,486,915
- **More info:** <https://marketing.kkl-jnf.org/single-project/?project-id=19403>



The Yad Mordechai Single-Track in the Western Negev

- **Description:** The trail includes two scenic loop routes immersed in forest landscapes. Cyclists can enjoy a combination of single-track and gravel paths, offering an enjoyable ride for a range of skill levels.

Along the way, riders encounter panoramic viewpoints, natural and geological features, heritage landmarks, and picnic areas.

Project number: 18793

- **Project cost:** NIS 565,403 - 1,130,805
- **More info:** <https://marketing.kkl-jnf.org/single-project/?project-id=18793>

